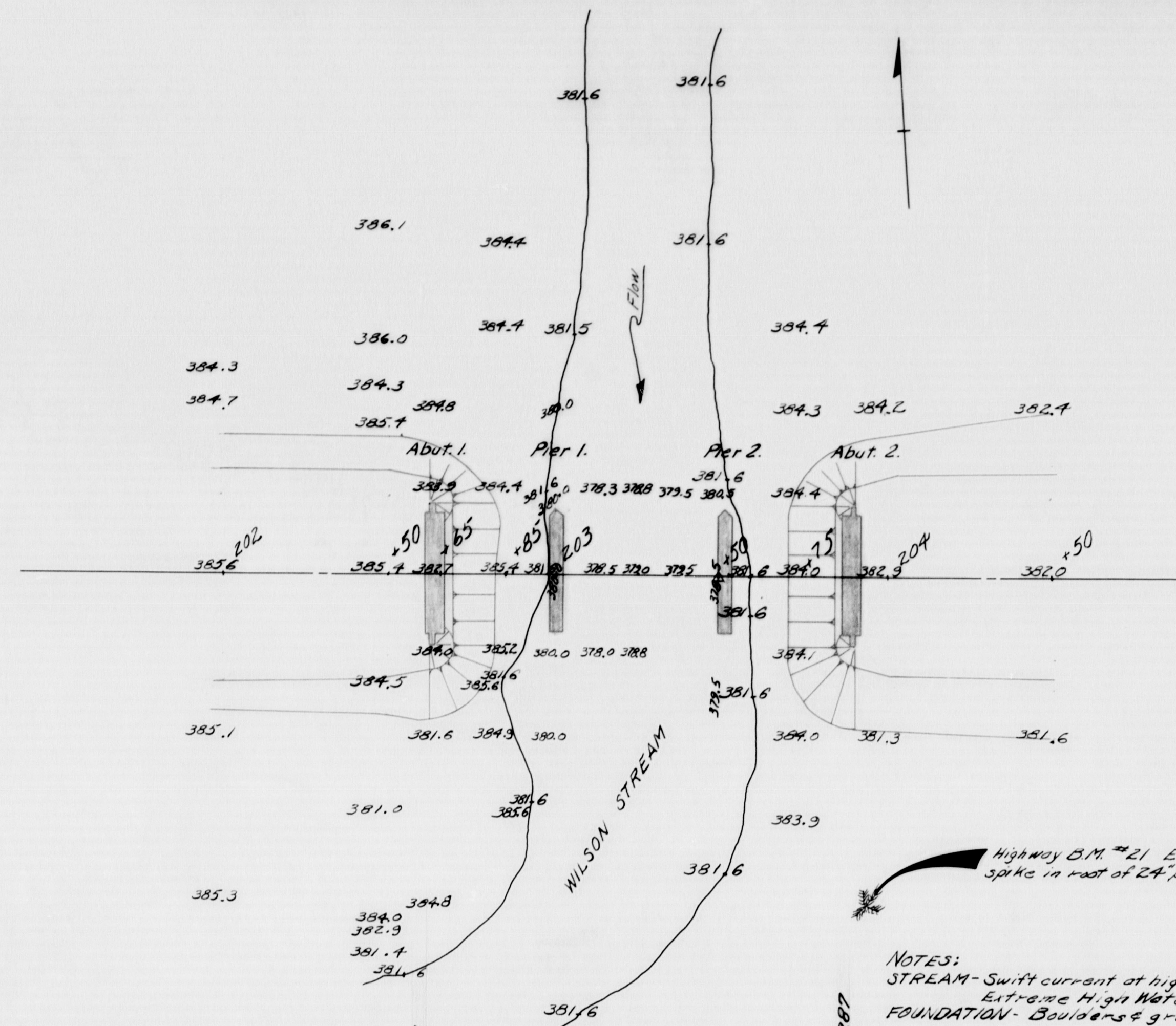
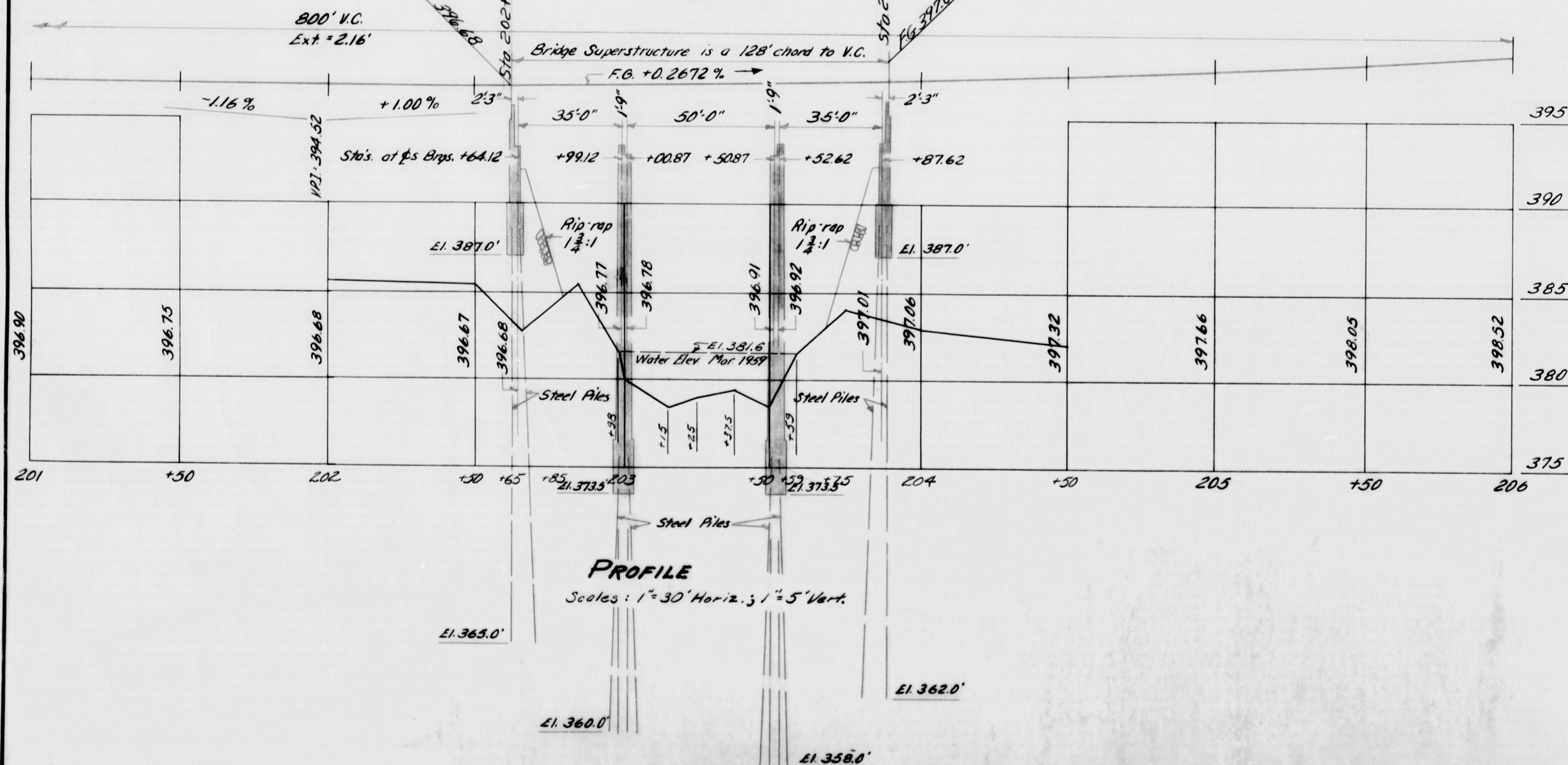


S. P. R.	STATE	PROJECT NUMBER	SHEET NO.	TOTAL SHEETS
1	MAINE	F-025-1(B)	13	160



NOTES:
 STREAM - Swift current at high stages. Bad ice conditions.
 Extreme High Water Elev. 391.0'
 FOUNDATION - Boulders & gravel. Probably firm material.

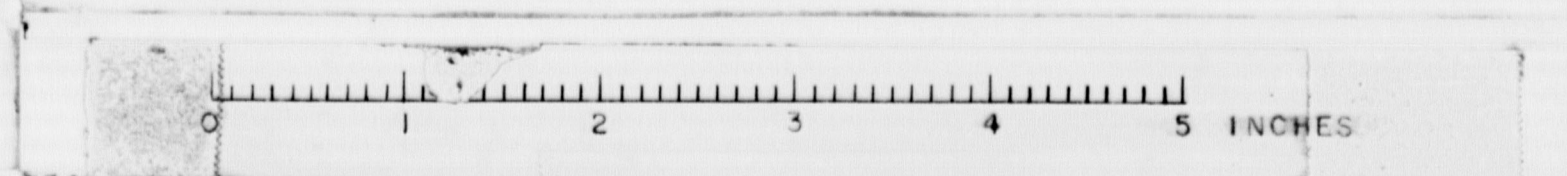
PLAN
 Scale: 1" = 30'



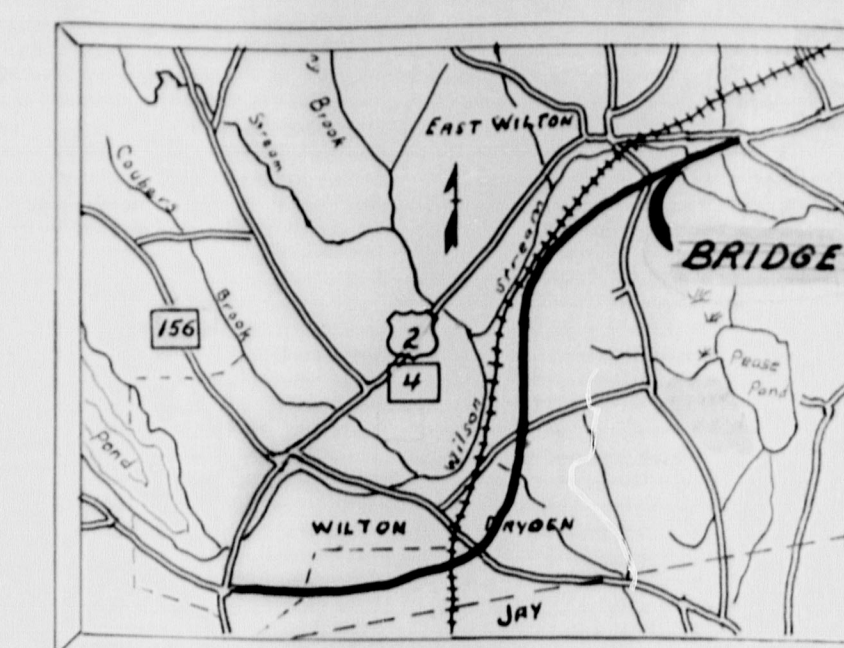
PROFILE
 Scales: 1" = 30' Horiz.; 1" = 5' Vert.

DESIGN - HICKS	CHECK - HARRIS
BRIDGE NO. BLAKE	PLANT - HICKS
STATE HIGHWAY COMMISSION BRIDGE DIVISION	
WILSON STREAM BRIDGE OVER	
WILSON STREAM IN THE TOWN OF	
WILTON FRANKLIN COUNTY	
SURVEY	
SHEET 1 OF 11	AUGUSTA, MAINE MAR. 1959

M-1643



B. P. R. REG. NO.	STATE	PROJECT NUMBER	SHEET NO.	TOTAL SHEETS
1	MAINE	F-028-1(8)	14	160



LOCATION MAP
Scale: 1" = 1 mile

ENGINEER'S ESTIMATE

Item	Description	Units
204-10	Structural Earth Exc., Drainage	58 cy.
204-14	Structural Earth Exc., Piers	230 cy.
205-9	Granular Borrow	375 cy.
404-29	Bituminous Concrete Surface Course, Type B	45 tons
701-33	Portland Cement Concrete, Abuts. and Ret. Walls	88 c.y.
701-35	Portland Cement Concrete, Piers	277 c.y.
701-40	Port. Cem. Conc., Rdwy. and Sidw. Slabs on Stl. Bridges	165 c.y.
701-47	Portland Cement	740 bbls.
702-103	Structural Steel, Fabricated and Delivered	102,300 lbs.
702-104	Structural Steel, Erection	102,300 lbs.
702-105	Structural Steel, Field Painting	102,300 lbs.
703-9	Bronze or Copper Alloy Plates, Delivered	50 lbs.
703-10	Bronze or Copper Alloy Plates, Placing	50 lbs.
705-13	Reinforcing Steel, Delivered	46,625 lbs.
705-14	Reinforcing Steel, Placing	46,625 lbs.
705-17	Shear Connectors	Lump Sum
708-16	Steel H-Beam Piles, 10"H42*	1178 lin. ft.
803-7	Cofferdams, Piers	Lump Sum
806-7	Aluminum Rail	255 lin. ft.
807-9	Membrane Waterproofing	427 sq. yds.
905-32	Anchorages, Type "C" Guard Rail	4 each
907-10	Hand Laid Riprap	445 cy.

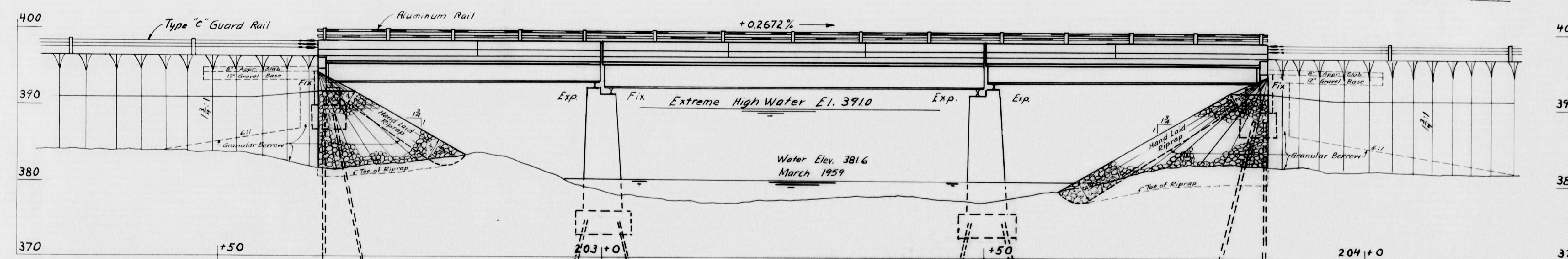
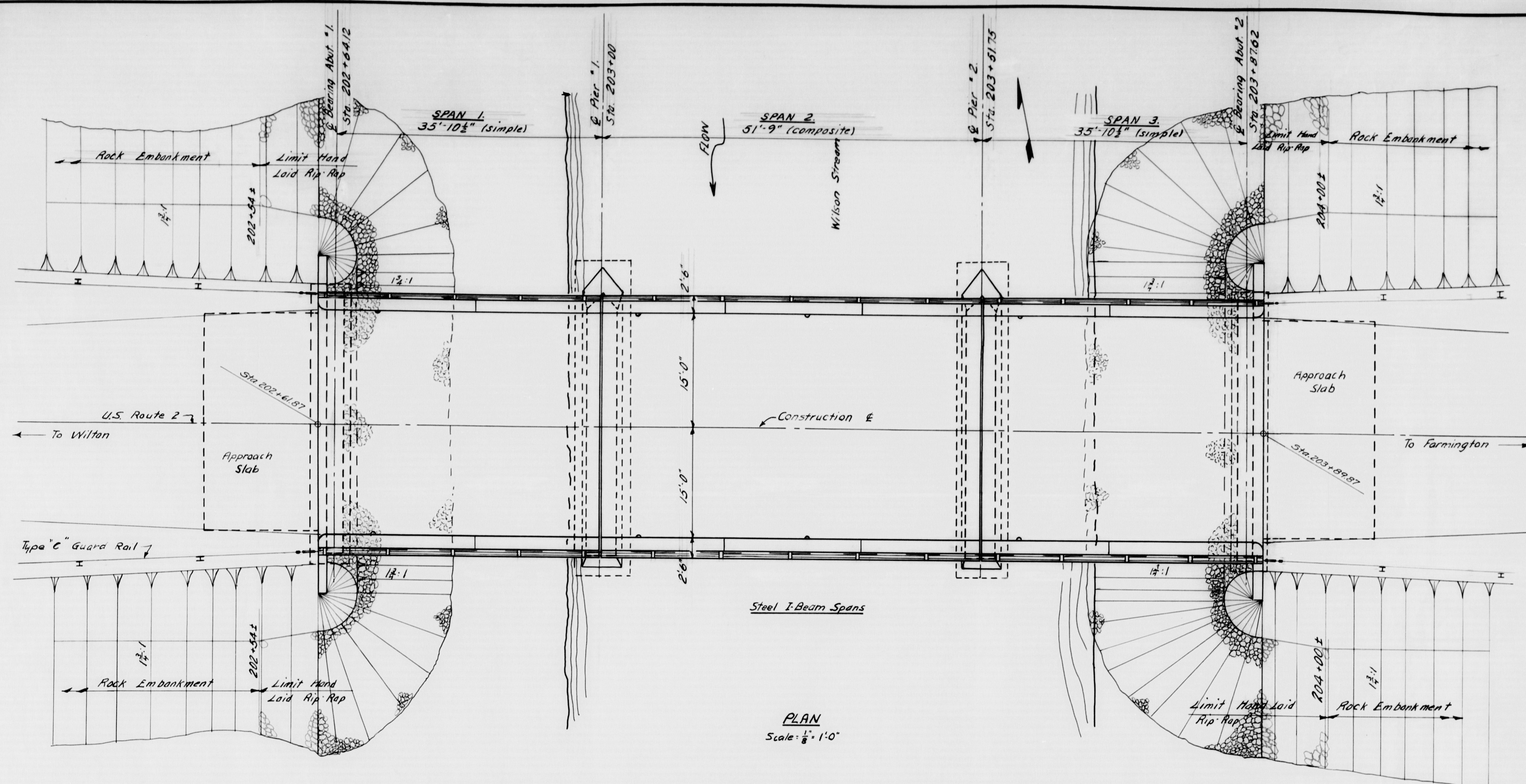
DESIGN - PORTER DET. LIBBY
TRACE - LIBBY
CHECK - Harris

BRIDGE NO.
SURVEY -
PLOT -

STATE HIGHWAY COMMISSION
BRIDGE DIVISION
WILSON STREAM BRIDGE
OVER
WILSON STREAM
IN THE TOWN OF
WILTON
FRANKLIN COUNTY
GENERAL PLAN

SHEET 2 OF 11 AUGUSTA, MAINE MARCH 1960

M-1644



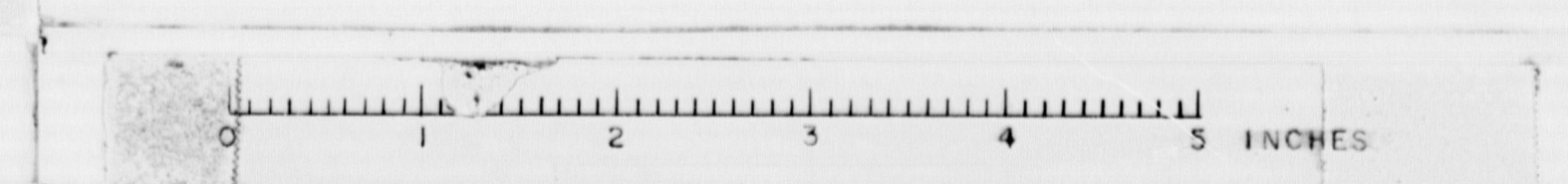
DESIGN SPECIFICATIONS
ASHO Standard Specifications for
Highway Bridges 1957.
fs = 18,000 ft = 1200 n = 10

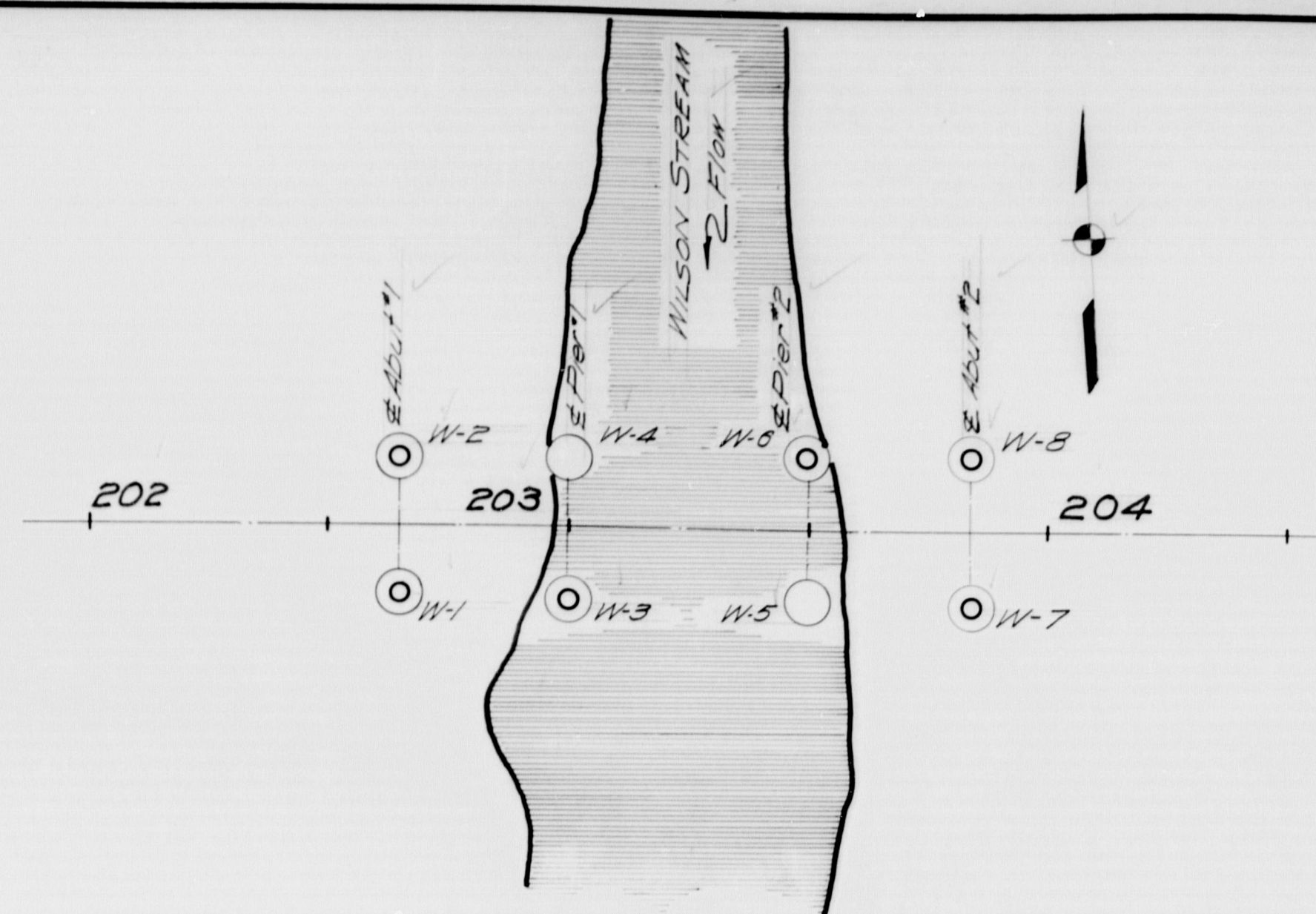
LOADING
H20-S16-44

CONTRACT SPECIFICATIONS
State of Maine, State Highway Commission
Standard Specifications, Rev. Jan 56.

CONCRETE CLASSIFICATION
Abutments Class A
Piers Class B
Superstructure & Approach Slab Class A

TRAFFIC
ADT 1960 = 2175
ADT 1980 = 3045
DHV = 457
T = 8%
D = 60%
V = 60 mph





PLAN

BORING NOTES

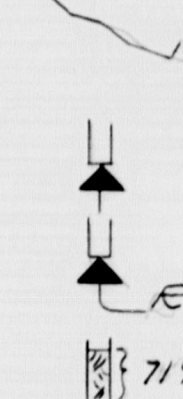
Boring

Sounding

Number of blows of 275# hammer falling 18 inches required to drive extra heavy casing one foot thus (borings only):
Bottom of boring indicated thus:

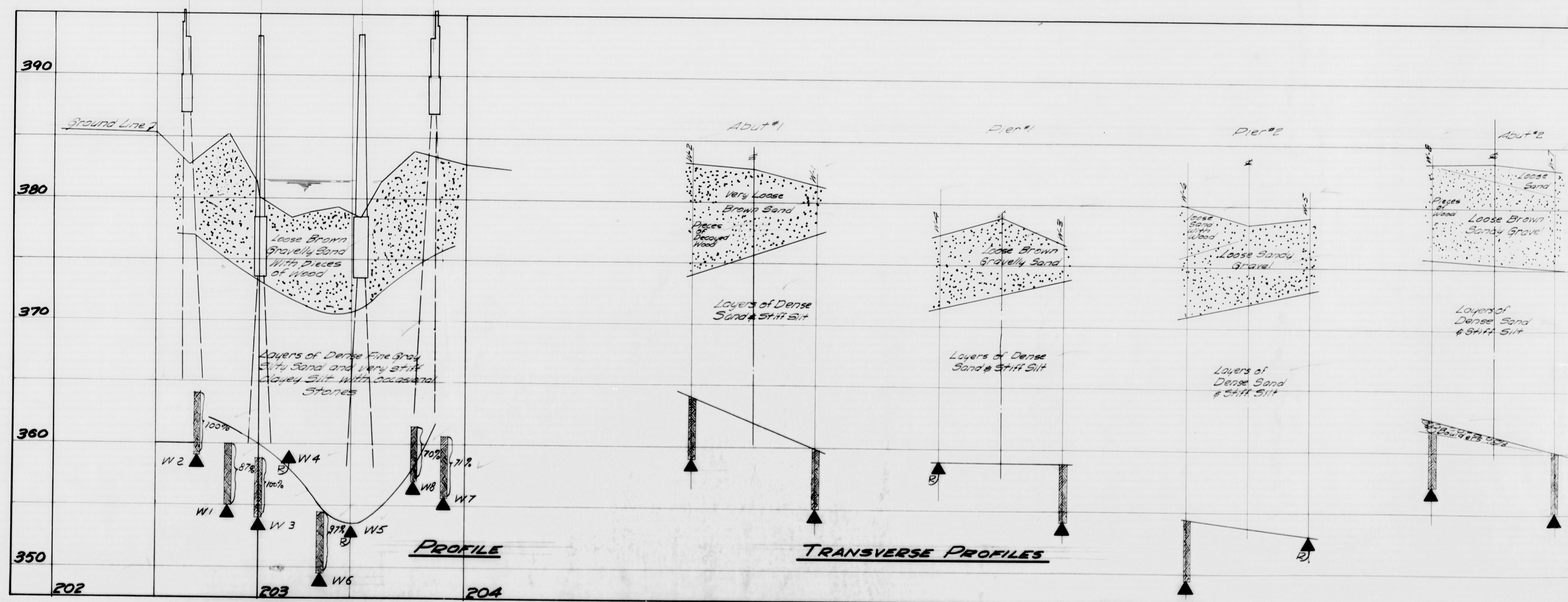
Refusal of drill rods or casing indicated thus:

Percent recovery of rock core by diamond bit thus:



35'-10 1/2" 51'-9" 35'-10 1/2"
Abut #1 Brg. Pier #1 Brg. Pier #2 Brg. Abut #2

Finished Grade



PROFILE

TRANSVERSE PROFILES

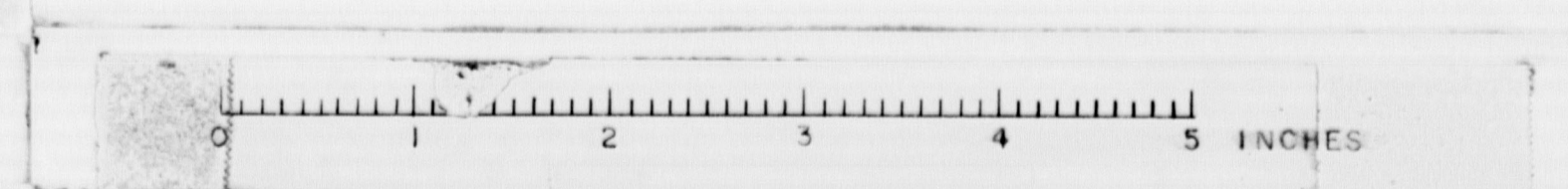
DESIGN - BORCE
TRACE - C. H. B.
CHECK - J. S. H.

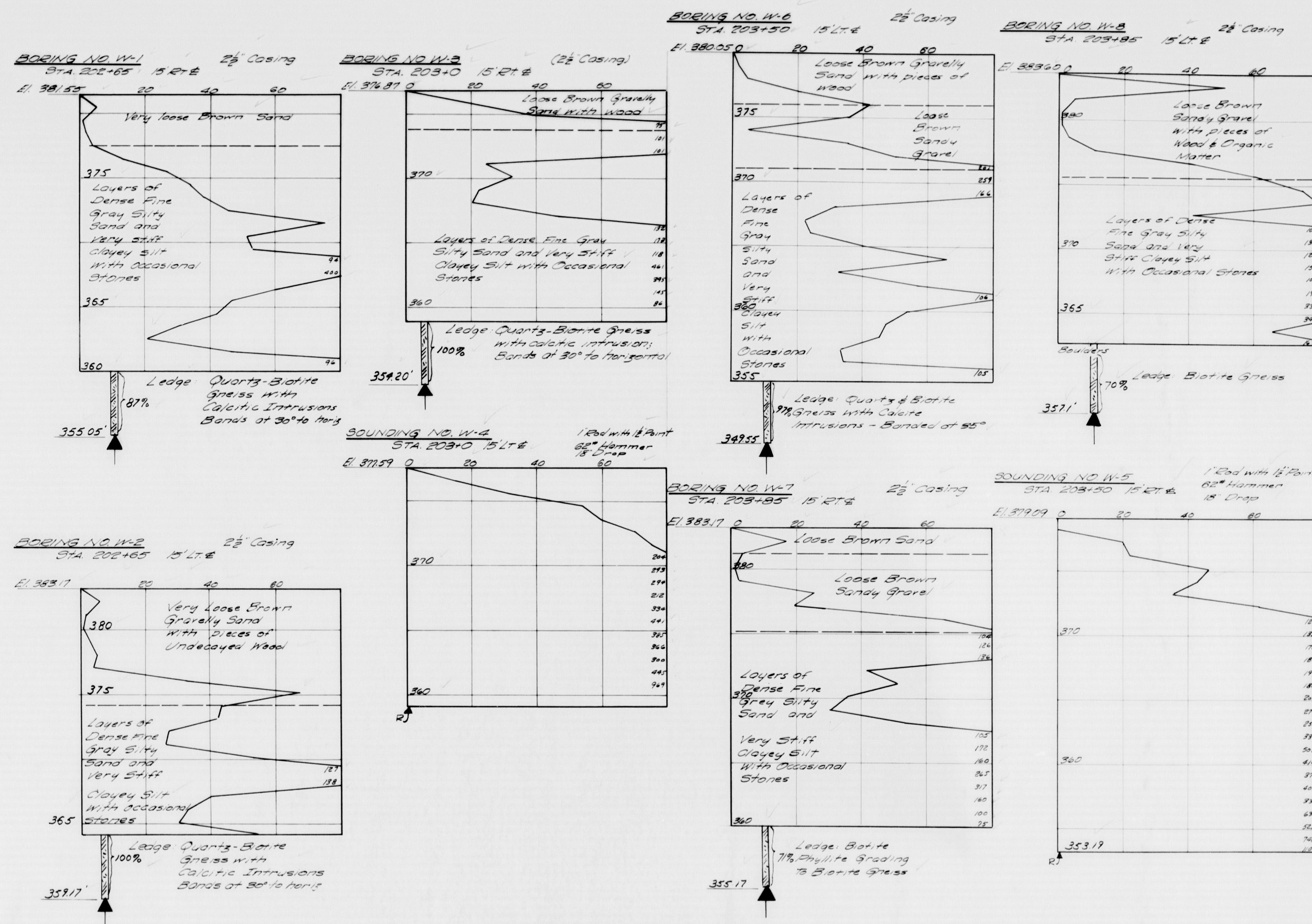
BRIDGE NO. 1
SURVEY - PLOT -

STATE HIGHWAY COMMISSION
BRIDGE DIVISION
WILSON STREAM BRIDGE
OVER
WILSON STREAM
IN THE TOWN OF
WILTON
FRANKLIN COUNTY
SOILS SURVEY

SHEET 3 OF 11 AUGUSTA, MAINE MARCH 1960

M-1645





DRIVING RESISTANCES
(Blows per Foot)

DESIGN - BOYLE
TRACE - [initials]
CHECK - [initials]

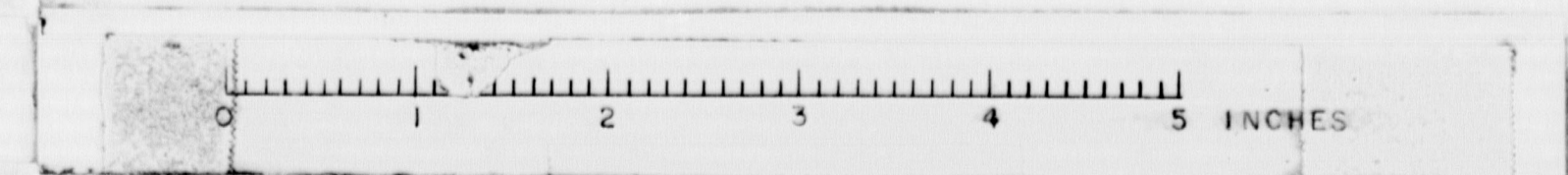
BRIDGE NO. [blank]
SURVEY - [blank]
PILOT - [blank]

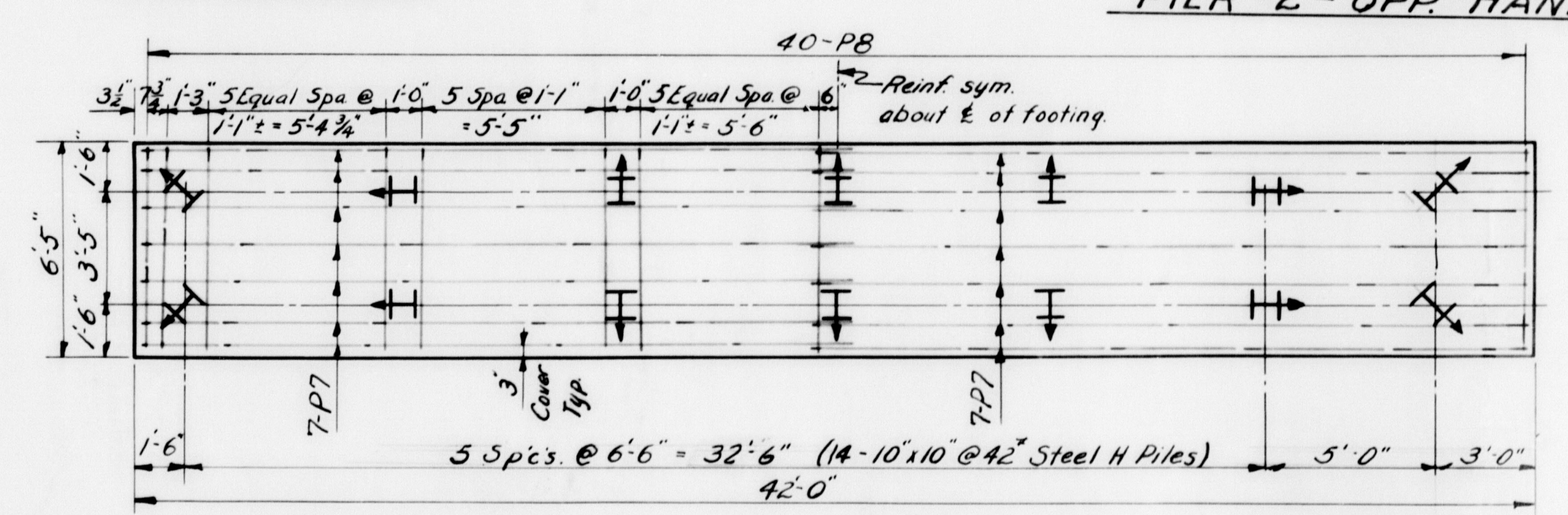
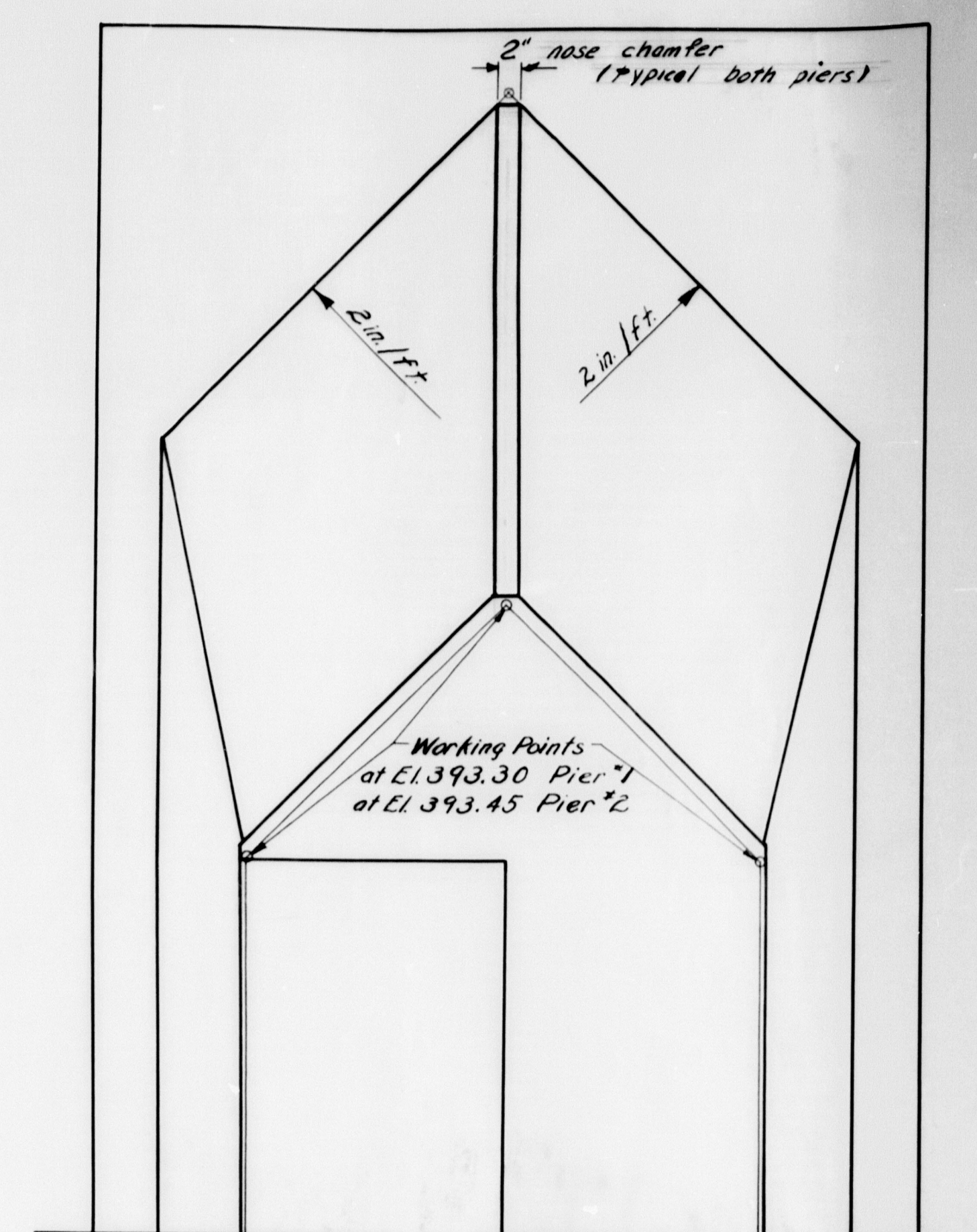
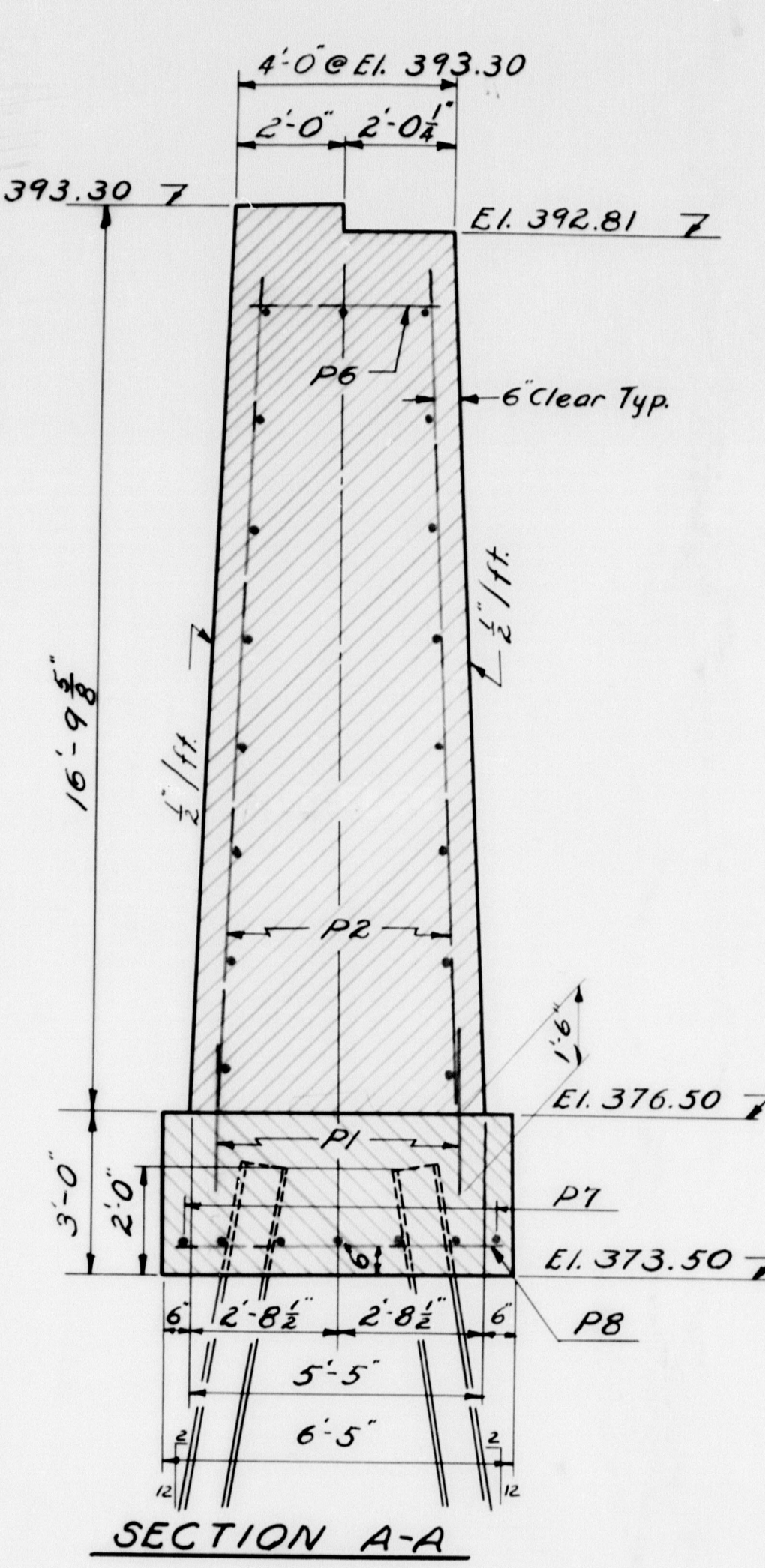
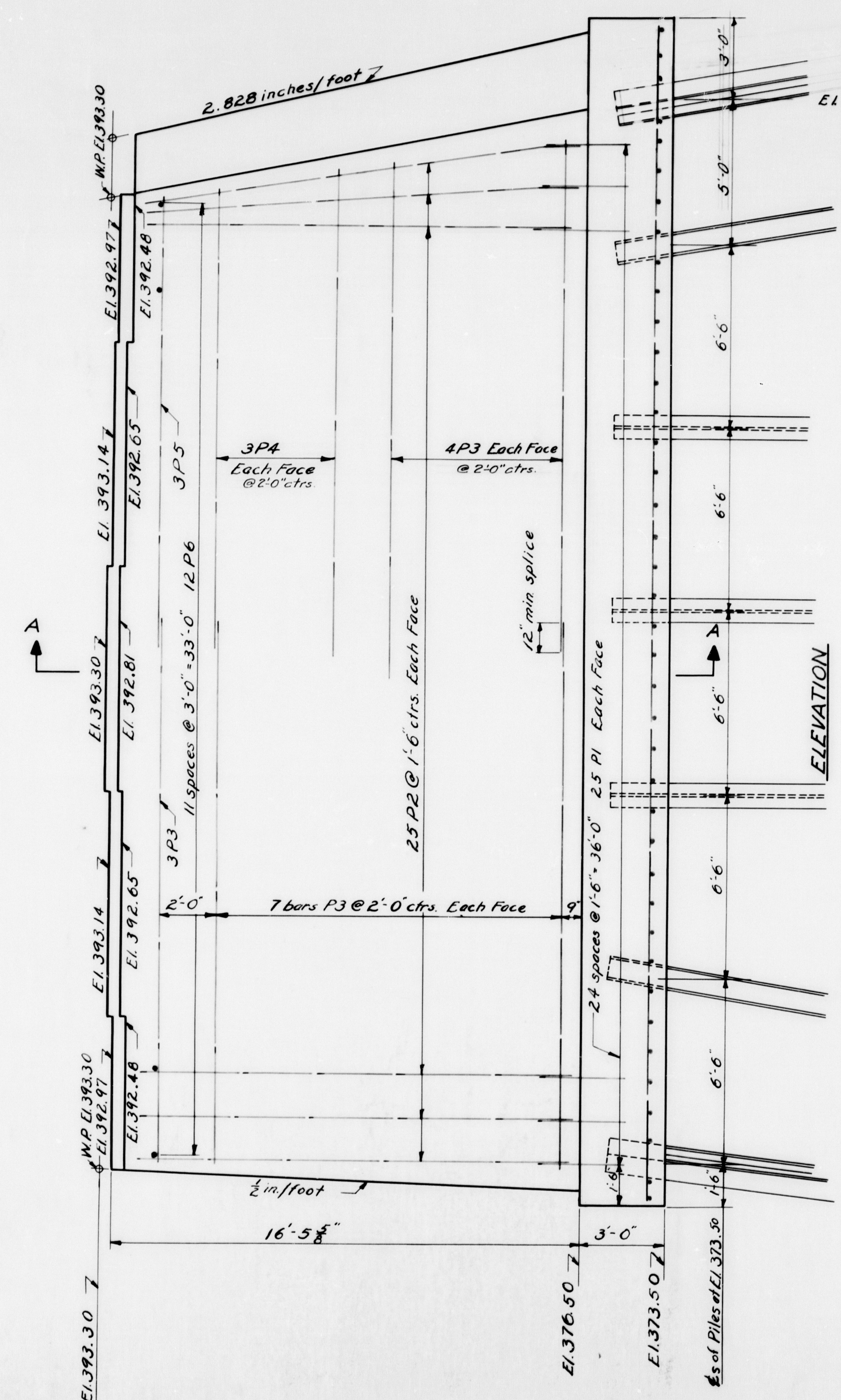
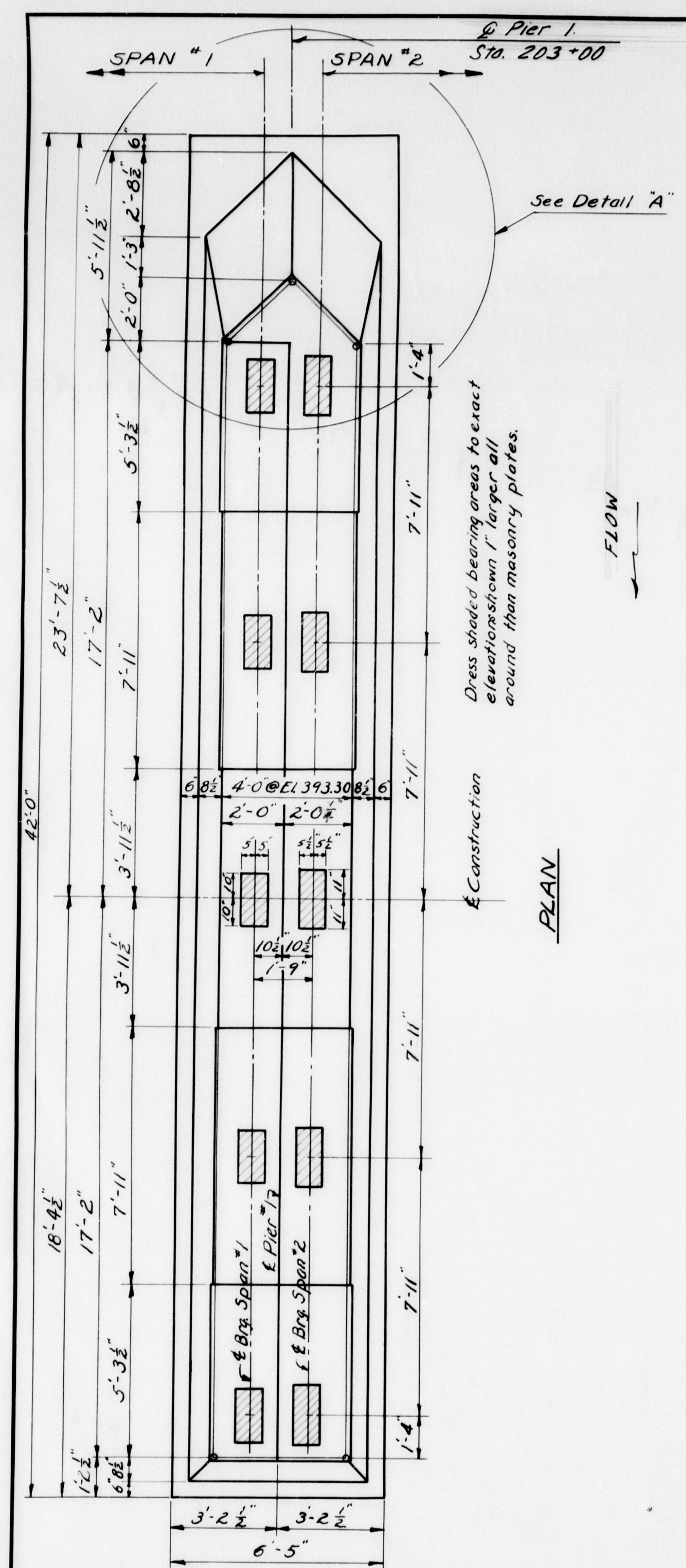
STATE HIGHWAY COMMISSION
BRIDGE DIVISION

WILSON STREAM BRIDGE
OVER
WILSON STREAM
IN THE TOWN OF
WILTON
FRANKLIN COUNTY
SOILS SURVEY

SHEET 4 OF 11 AUGUSTA, MAINE MARCH 1960

M-1646





10"x10"x42" Steel H Piles.
 Max. allowable pile load = 37 tons.
 Batter all piles 2/ft in direction of arrow shown thus: H-
 Pier #1 - 14 piles. Estimated length = 20'-0"
 Pile cut-off elevation = 375.5'
 All piles to be driven to ledge or practical refusal.

DESIGN - PORTER, DET. A.R.C. DGE NO.
 TRACE - R.M.S. SURVEY -
 CHECK - Harris PLOT -

STATE HIGHWAY COMMISSION
 BRIDGE DIVISION

WILSON STREAM BRIDGE
 OVER
WILSON STREAM
 IN THE TOWN OF
WILTON
FRANKLIN COUNTY

PIER NO. 1

SHEET 6 OF 11 AUGUSTA, MAINE MARCH, 1960

M-1648

